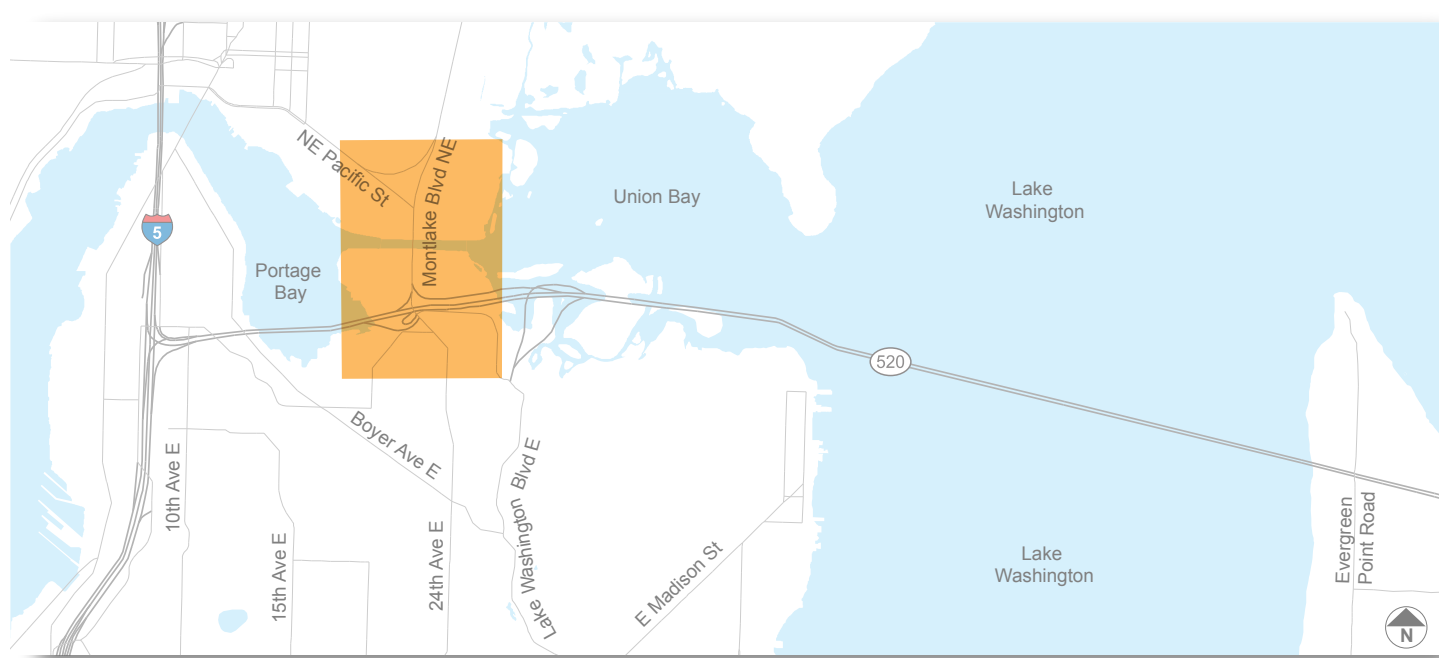
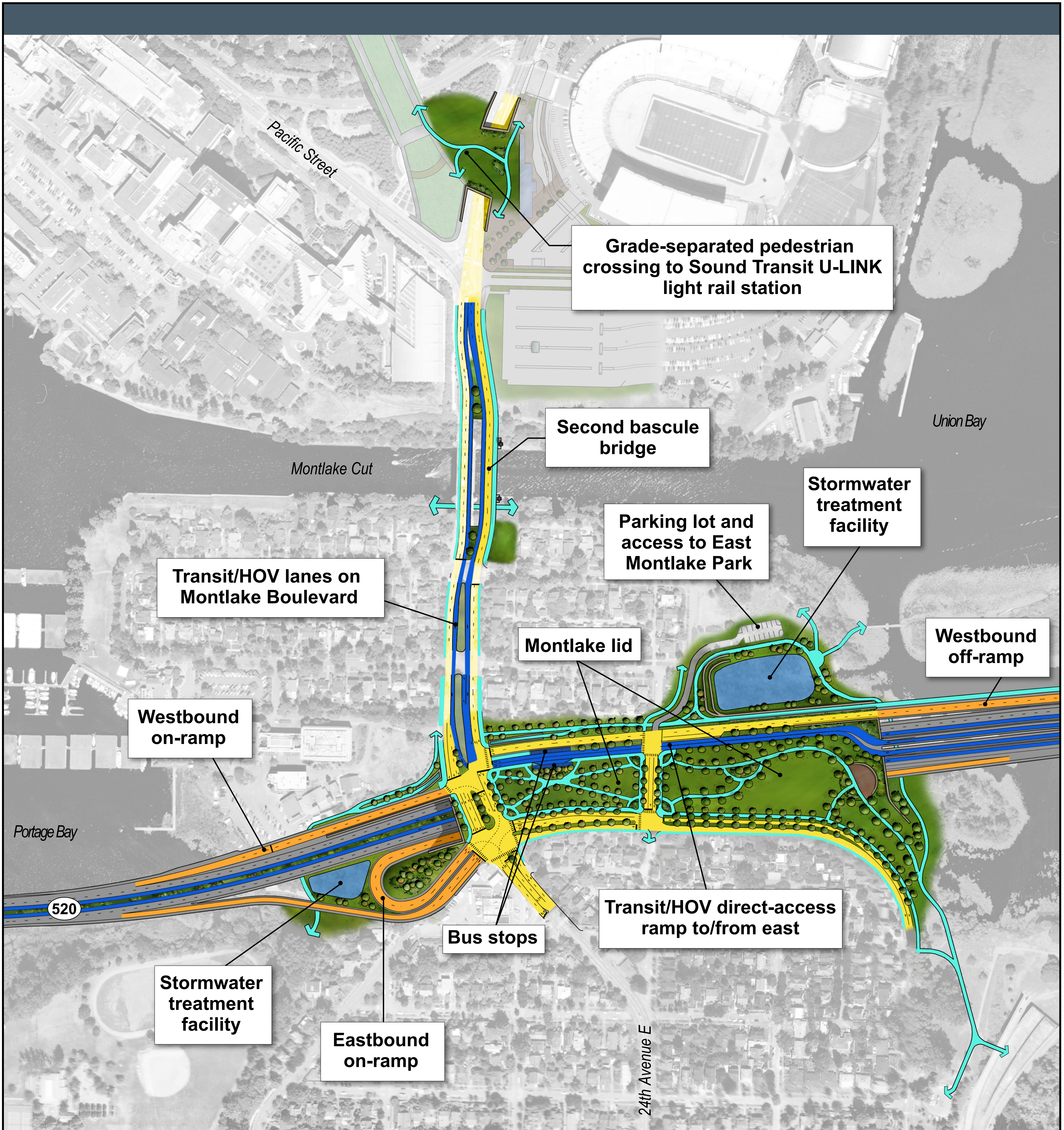


Montlake Interchange



Vicinity map

Additional refinement will occur through the City of Seattle design process per legislation (ESSB 6392).

LEGEND:

- General-purpose lane (SR 520)
- Existing general-purpose (local)
- General-purpose lane (local)
- Transit/HOV lane
- On- and off-ramp
- Bicycle and pedestrian path

