

Property of the Seattle Police Department  
\*\* OFFICIAL LAW ENFORCEMENT USE ONLY \*\*

# Ferguson, MO Grand Jury Ruling

## Incident Action Plan



**11/28/2013**

**1200-**

**Activity ID 14NO457**

**Resource Category 403**

This record is exempt from disclosure under RCW Section 42.56.420(1)(a) of the Public Disclosure Act, RCW 42.56.420 et seq. This record has been prepared, assembled or is maintained to prevent, mitigate or respond to criminal terrorist acts. This record is a specific and unique vulnerability assessment, or response or deployment plan, or is compiled underlying data collected in preparation of, or that is essential to, such an assessment or plan. Public disclosure of this record would have a substantial likelihood of threatening public safety.

**DO NOT DUPLICATE**

**DESTROY BY SHREDDING**

# Ferguson, MO Grand Jury Decision

## Situation:

On August 9, 2014, Michael Brown, an unarmed African American man was fatally shot by a white police officer in Ferguson, Missouri. The circumstances surrounding the incident have been widely disputed and have resulted in civil unrest, protests, and have received considerable media attention. On August 20, 2014, a St. Louis County Grand Jury convened to determine whether or not charges will be filed against the officer involved in the shooting. The Grand Jury is expected to make a decision by the middle of November. Various media outlets are reporting that it is likely that the decision will spark further protests and civil unrests throughout the country. It should be noted that there is a two hour time difference between Ferguson, MO and Seattle, WA. The Seattle Police Department is prepared to respond and assist in the event there are demonstrations in support of the decision or opposed to it.

## Mission:

The mission of the Seattle Police Department is to enforce the law and preserve order. The Seattle Police response priorities are Life Safety, Incident Stabilization, Property Conservation and Crime Scene Preservation.

## Concept of Operation:

### SPOC:

The Seattle Police Operations Center will be activated for this event. The SPOC may be staffed with additional personnel and will be assisted by other agencies as required. If directed by AC McDonagh, SPOC will be staffed 24/7.

### DEPLOYMENT PLAN:

Precinct Commanders are authorized to go to priority calls and/or hold over staff from the previous watch. If it is determined to call back officers to meet minimum staffing levels, Pct Commanders will receive prior approval from SPOC. The use of backfill officers on overtime must be balanced by call loads and the number of officers remaining on the watch.

The schedules for the Mountain Bike squads and ACT teams has been posted for the month of November. If any of these groups are on-duty at the time a demonstration begins, they will comprise the initial response.

### RESPONSE PROFILE:

Field commanders will have the authority to increase the level and nature of the response to match the protest activity. Standard departmental force and less-lethal restrictions will apply. Force investigation will be completed for this event if force is used and the protocol is listed in the addendum section

Except for life safety or exigent circumstances, arrests will be made only at the direction and with the approval of an assigned commander.

### ONGOING STAFFING:

If an unplanned protest extends beyond the first operational period, staffing will continue to be provided through detailing pre-determined patrol squads. Precinct commanders are authorized to hold over a squad, or a squad-strength number of officers, to replace the group that has been detailed to the incident after advising the SPOC.

Precincts will have to manage their own replacements through a combination of hold-overs and call-backs.

Concept of Operations... cont.

**COMMAND STAFFING:**

Based on the timing of the release of the grand jury decision, any of the below assignments can be adjusted.

City-Wide Command (SPOC)... Assistant Chief Paul McDonagh

Incident Commander... Captain Chris Fowler

Deputy Incident Commander... Captain Pierre Davis

Operations Section Chief... Captain Steve Wilske

Deputy Operations Section Chief... Lieutenant Bryan Grenon

Night Duty Captain (1700 - 0300 Hrs)

Captain Ron Leavell... Wed, Thu, Fri & Sat., Captain James Koutsky... 11/19 - 11/26, Captain Neil Low... 11/26 - 12/3

**Precincts** - Precincts will implement Precinct Area Commands when activated by SPOC. Precincts will be responsible for providing precinct security and determining staffing assignments for patrol. If additional resources are required to support patrol operations, the Precinct will determine their needs and receive approval for calling in resources from SPOC. The patrol lieutenant work schedule is attached.

**Headquarters** - Captain Nolette will command all HQ based detectives and oversee security measures at Headquarters.

**Park 90/5** - Captain Edwards will oversee all detectives, training personnel and staff attending training and provide for the security of Park 90/5. Staff attending training may be reallocated at the direction of SPOC

**SPECIALTY UNITS:**

**Traffic and Mounted** will respond if they are on duty when the event occurs. The Incident Commander will determine whether to call in Traffic or Mounted personnel if the event occurs after hours.

The **SPD SWAT Team** will be available 24/7 for a response as directed by the Incident Commander.

**ABS** will respond regardless of the time of the event. Response will be at least one team.

**ADMIN REQUIREMENTS:**

Prisoner processing, force investigation sergeants and an activated SPOC are all part of the expected response.

**Logistics:**

**SPOC:**

The Seattle Police Operations Center will support the Operations Section by...

- Coordinating additional staffing needs
- Coordinating logistical support prior to and during on-going operations
- Providing liaison support with mutual aid partners
- Maintaining resource situational awareness for Incident Command
- Monitoring city-wide police operations to ensure that on-going police services are maintained

Upon direction from AC McDonagh, SPOC may be activated 24 hours a day as long as necessary.

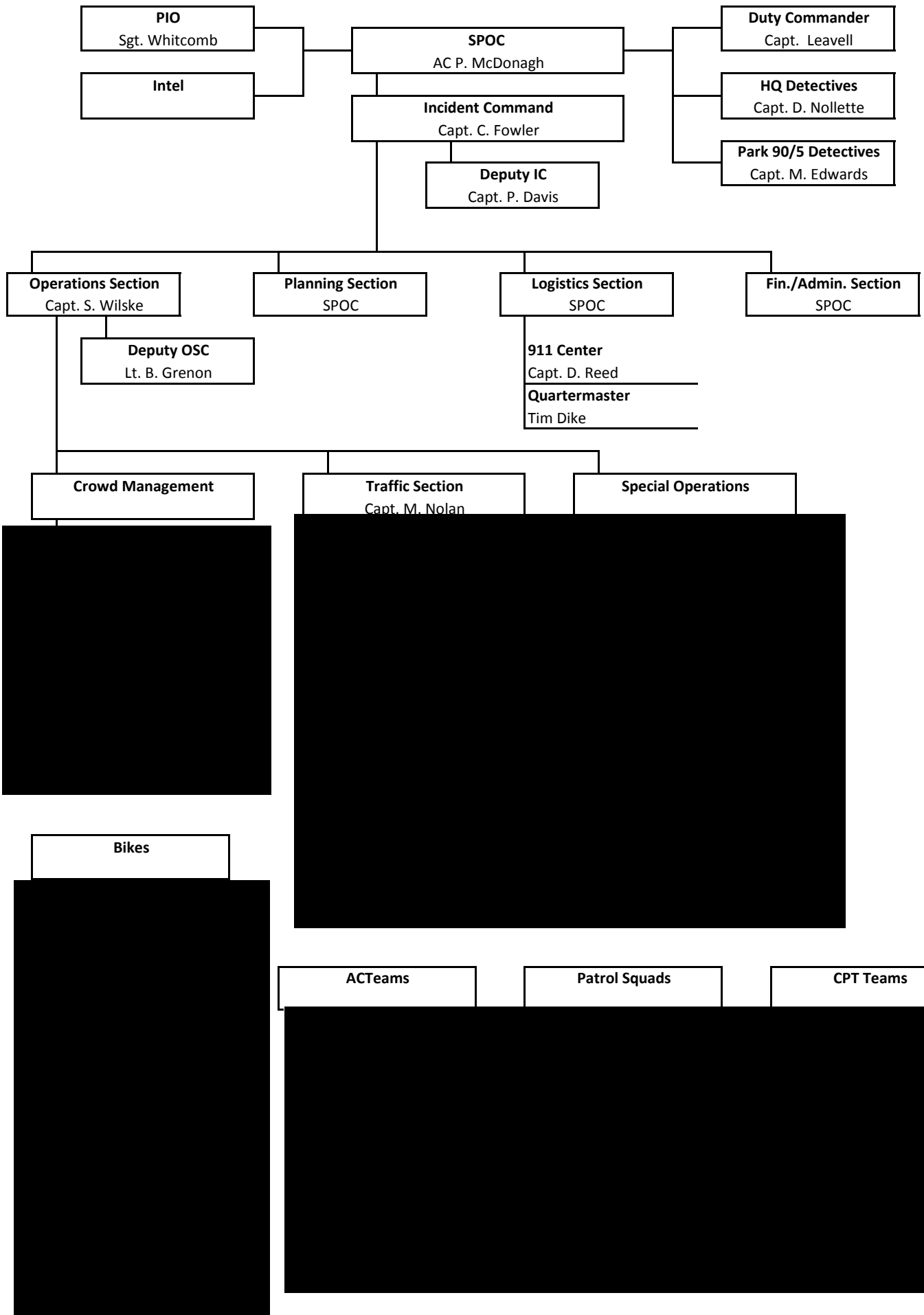
An SFD Chief Officer will be assigned to SPOC to serve as a liaison between SPD and SFD.

**911 Center:**

The SPD 911 Center will support the Operations Section by providing the radio communications necessary to conduct field operations required for this event. Dispatch operators will be assigned to radio talk channels to monitor, document and respond to requests from field operations.







<b>DIVISION ASSIGNMENT LIST (ICS-204)</b>		<b>Branch</b> Crowd Management		<b>Division / Group</b> Bike Squads			
<b>Incident Name</b> Ferguson, MO Grand Jury Ruling		<b>Operational Period</b> From: _____ / _____ Hrs To: _____ / _____ Hrs					
<b>Operations Personnel</b>							
<b>Operations Section Chief</b>		<b>Division/Group Supervisor</b>					
<b>Branch Director</b>							
<b>Resources Assigned this Period</b>							
<b>Squad Name</b>	<b>Leader</b>	<b>Number Persons</b>	<b>Trans. Needed</b>	<b>Roll Call Time &amp; Location</b>	<b>Estimated Demob. Time</b>		
West Bikes #1		7	No				
West Bikes #2		7	No				
West Bikes #3		7	No				
West Night Bikes		10	No				
East Bikes		0	No				
North Bikes #1		16	No				
North Bikes #2		0	No				
Southwest Bikes		0	No				
South Bikes		0	No				
<b>Resource Roles and Responsibilities:</b>							
<p>Bike Squads will have primary responsibility for police presence during all marches associated with this event. Will maintain a presence adjacent to all rallies and gathering points for this event. When making arrests, bicycle officers will hand off arrestees to ACT or designated arrest teams. Bike Officers will wear standard SPD bicycle uniform.</p> <p>Except for life safety or exigent circumstances, arrests will be made only at the direction and with the approval of an assigned commander.</p>							
<b>Special Instructions:</b>							
<p>1. Taking enforcement action in any large group requires good judgement to ensure Officer safety and to prevent inciting the crowd. When possible, quickly remove suspects from the area to facilitate the continuation of the protest.</p> <div style="background-color: black; height: 40px; width: 100%;"></div> <p>3. All Officers will have eye protection on their person at all times. Officers should be aware that small items could be thrown or propelled from within any large group.</p> <p>4. All Officers will have their gas mask on their person at all times.</p>							
<b>Communications Summary</b>							
<b>Function</b>	<b>System</b>	<b>Talk Group</b>	<b>Freq.</b>	<b>Function</b>	<b>System</b>	<b>Talk Group</b>	<b>Freq.</b>
Crowd Mngmnt Event #1	█	█	█	Transit Police (Tunnel & Surface)	█	█	█
Crowd Mngmnt Event #2	█	█	█	Transit Police (Tunnel & Surface)	█	█	█
Crowd Mngmnt Command	█	█	█				
<b>Prepared by:</b> SPOC		<b>Approved by:</b>		<b>Date:</b>	<b>Time:</b>		









<b>DIVISION ASSIGNMENT LIST (ICS-204)</b>	<b>Branch</b> Crowd Management	<b>Division / Group</b> Mounted Patrol
<b>Incident Name</b> Ferguson, MO Grand Jury Ruling	<b>Operational Period</b> From: _____ / _____ Hrs To: _____ / _____ Hrs	

<b>Operations Personnel</b>			
<b>Operations Section Chief</b>		<b>Division/Group Supervisor</b>	
<b>Branch Director</b>			

Resources Assigned this Period					
Squad Name	Leader	Number Persons	Trans. Needed	Roll Call Time & Location	Estimated Demob. Time
[REDACTED]			No		

**Resource Roles and Responsibilities:**

The Mounted Patrol Unit will provide crowd management support as directed by the Operations Section Chief.

Except for life safety or exigent circumstances, arrests will be made only at the direction and with the approval of an assigned commander.

**Special Instructions:**

1. Taking enforcement action in any large group requires good judgement to ensure Officer safety and to prevent inciting the crowd. When possible, quickly remove suspects from the area to facilitate the continuation of the protest.

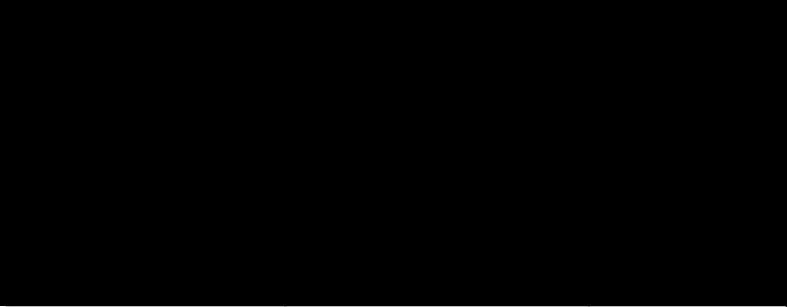
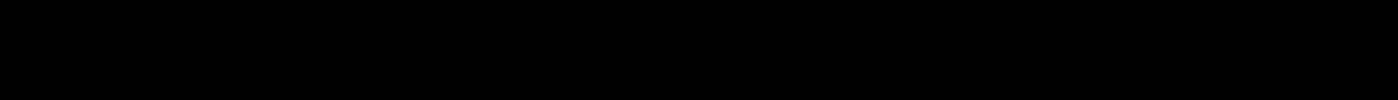
[REDACTED]

3. All Officers will have eye protection on their person at all times. Officers should be aware that small items could be thrown or propelled from within any large group.

4. All Officers will have their gas mask on their person at all times.

Communications Summary							
Function	System	Talk Group	Freq.	Function	System	Talk Group	Freq.
Crowd Mngmnt Event #1	■	■	■	■	■	■	■
Crowd Mngmnt Event #2	■	■	■	■	■	■	■
Crowd Mngmnt Command	■	■	■				
<b>Prepared by:</b> SPOC		<b>Approved by:</b>			<b>Date:</b>		<b>Time:</b>



<b>DIVISION ASSIGNMENT LIST (ICS-204)</b>		<b>Branch</b> Crowd Management		<b>Division / Group</b> ACTeams			
<b>Incident Name</b> Ferguson, MO Grand Jury Ruling		<b>Operational Period</b> From: _____ / _____ Hrs To: _____ / _____ Hrs					
<b>Operations Personnel</b>							
<b>Operations Section Chief</b>		<b>Division/Group Supervisor</b>					
<b>Branch Director</b>							
<b>Resources Assigned this Period</b>							
<b>Squad Name</b>	<b>Leader</b>	<b>Number Persons</b>	<b>Trans. Needed</b>	<b>Roll Call Time &amp; Location</b>	<b>Estimated Demob. Time</b>		
			No				
			No				
			No				
			No				
			No				
<b>Resource Roles and Responsibilities:</b>							
<p>Will provide a police presence at all rallies and gathering points for this event. ACT officers will pre-stage along the march route at various intervals as determined by the venue commander. ACTeam officers will also serve as arrest teams as required.</p> <p>Except for life safety or exigent circumstances, arrests will be made only at the direction and with the approval of an assigned commander.</p>							
<b>Special Instructions:</b>							
<p>1. Taking enforcement action in any large group requires good judgement to ensure Officer safety and to prevent inciting the crowd. When possible, quickly remove suspects from the area to facilitate the continuation of the protest.</p>  <p>3. All Officers will have eye protection on their person at all times. Officers should be aware that small items could be thrown or propelled from within any large group.</p> <p>4. All Officers will have their gas mask on their person at all times.</p>							
<b>Communications Summary</b>							
<b>Function</b>	<b>System</b>	<b>Talk Group</b>	<b>Freq.</b>	<b>Function</b>	<b>System</b>	<b>Talk Group</b>	<b>Freq.</b>
Crowd Mngmnt Event #1	█	█	█	Transit Police (Tunnel & Surface)	█	█	█
Crowd Mngmnt Event #2	█	█	█	Transit Police (Tunnel & Surface)	█	█	█
Crowd Mngmnt Command	█	█	█				
<b>Prepared by:</b> SPOC		<b>Approved by:</b>		<b>Date:</b>	<b>Time:</b>		







<b>DIVISION ASSIGNMENT LIST (ICS-204)</b>		<b>Branch</b> Infrastructure Protection		<b>Division / Group</b> Detectives - HQ			
<b>Incident Name</b> Ferguson, MO Grand Jury Ruling		<b>Operational Period</b> From: _____ / _____ Hrs To: _____ / _____ Hrs					
<b>Operations Personnel</b>							
<b>Operations Section Chief</b>		<b>Division/Group Supervisor</b>					
<b>Branch Director</b>							
<b>Resources Assigned this Period</b>							
<b>Squad Name</b>	<b>Leader</b>	<b>Number Persons</b>	<b>Trans. Needed</b>	<b>Roll Call Time &amp; Location</b>	<b>Estimated Demob. Time</b>		
[REDACTED]							
[REDACTED]							
[REDACTED]							
[REDACTED]							
[REDACTED]							
[REDACTED]							
[REDACTED]							
[REDACTED]							
[REDACTED]							
[REDACTED]							
<b>Resource Roles and Responsibilities:</b>							
Detectives assigned to SPD HQ will report to Capt. Deanna Nollette for assignments related to this event.							
Except for life safety or exigent circumstances, arrests will be made only at the direction and with the approval of an assigned commander.							
<b>Special Instructions:</b>							
1. Taking enforcement action in any large group requires good judgement to ensure Officer safety and to prevent inciting the crowd. When possible, quickly remove suspects from the area to facilitate the continuation of the protest.							
[REDACTED]							
3. All Officers will have eye protection on their person at all times. Officers should be aware that small items could be thrown or propelled from within any large group.							
4. All Officers will have their gas mask on their person at all times.							
<b>Communications Summary</b>							
<b>Function</b>	<b>System</b>	<b>Talk Group</b>	<b>Freq.</b>	<b>Function</b>	<b>System</b>	<b>Talk Group</b>	<b>Freq.</b>
Crowd Mngmnt Event #1	█	█	█	Transit Police (Tunnel & Surface)	█	█	█
Crowd Mngmnt Event #2	█	█	█	Transit Police (Tunnel & Surface)	█	█	█
Crowd Mngmnt Command	█	█	█				
<b>Prepared by:</b> SPOC		<b>Approved by:</b>		<b>Date:</b>		<b>Time:</b>	



<b>DIVISION ASSIGNMENT LIST (ICS-204)</b>			Branch Special Operations		Division / Group SWAT		
Incident Name <b>Ferguson, MO Grand Jury Ruling</b>			Operational Period From: _____ / _____ Hrs To: _____ / _____ Hrs				
<b>Operations Personnel</b>							
Operations Section Chief			Division/Group Supervisor		Lt. Matt Allen		
Branch Director							
<b>Resources Assigned this Period</b>							
Squad Name		Leader	Number Persons	Trans. Needed	Roll Call Time & Location		Estimated Demob. Time
				No			
				No			
				No			
				No			
<b>Resource Roles and Responsibilities:</b>							
<b>Special Instructions:</b>							
1. Taking enforcement action in any large group requires good judgement to ensure Officer safety and to prevent inciting the crowd. When possible, quickly remove suspects from the area to facilitate the continuation of the protest.							
3. All Officers will have eye protection on their person at all times. Officers should be aware that small items could be thrown or propelled from within any large group.							
4. All Officers will have their gas mask on their person at all times.							
<b>Communications Summary</b>							
Function	System	Talk Group	Freq.	Function	System	Talk Group	Freq.
Crowd Mngmnt Event #1				Transit Police (Tunnel & Surface)			
Crowd Mngmnt Event #2				Transit Police (Tunnel & Surface)			
Crowd Mngmnt Command							
Prepared by: SPOC			Approved by:			Date:	Time:

<b>DIVISION ASSIGNMENT LIST (ICS-204)</b>	<b>Branch</b> Special Operations	<b>Division / Group</b> Arson Bomb Squad
<b>Incident Name</b> Ferguson, MO Grand Jury Ruling	<b>Operational Period</b> From: _____ / _____ Hrs To: _____ / _____ Hrs	

<b>Operations Personnel</b>			
<b>Operations Section Chief</b>		<b>Division/Group Supervisor</b>	Lt. Dave Clavadetscher
<b>Branch Director</b>			

Resources Assigned this Period					
Squad Name	Leader	Number Persons	Trans. Needed	Roll Call Time & Location	Estimated Demob. Time
[REDACTED]			No		
[REDACTED]			No		

**Resource Roles and Responsibilities:**



**Special Instructions:**  
 1. Taking enforcement action in any large group requires good judgement to ensure Officer safety and to prevent inciting the crowd. When possible, quickly remove suspects from the area to facilitate the continuation of the protest.



3. All Officers will have eye protection on their person at all times. Officers should be aware that small items could be thrown or propelled from within any large group.  
 4. All Officers will have their gas mask on their person at all times.

Communications Summary							
Function	System	Talk Group	Freq.	Function	System	Talk Group	Freq.
Crowd Mngmnt Event #1	█	█	█	Transit Police (Tunnel & Surface)	█	█	█
Crowd Mngmnt Event #2	█	█	█	Transit Police (Tunnel & Surface)	█	█	█
Crowd Mngmnt Command	█	█	█				

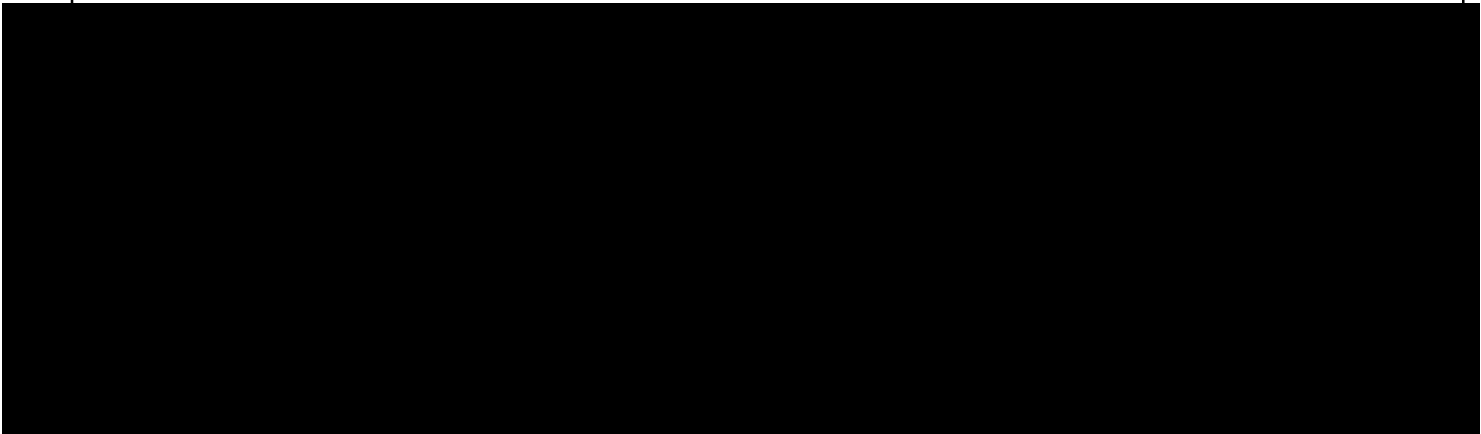
<b>Prepared by:</b> SPOC	<b>Approved by:</b>	<b>Date:</b>	<b>Time:</b>
-----------------------------	---------------------	--------------	--------------

<b>DIVISION ASSIGNMENT LIST (ICS-204)</b>	<b>Branch</b> Special Operations	<b>Division / Group</b> Intel
<b>Incident Name</b> Ferguson, MO Grand Jury Ruling	<b>Operational Period</b> From: _____ / _____ Hrs To: _____ / _____ Hrs	

<b>Operations Personnel</b>			
<b>Operations Section Chief</b>		<b>Division/Group Supervisor</b>	Lt. Eric Barden
<b>Branch Director</b>			

Resources Assigned this Period					
Squad Name	Leader	Number Persons	Trans. Needed	Roll Call Time & Location	Estimated Demob. Time
[REDACTED]			No		
			No		
			No		

**Resource Roles and Responsibilities:**



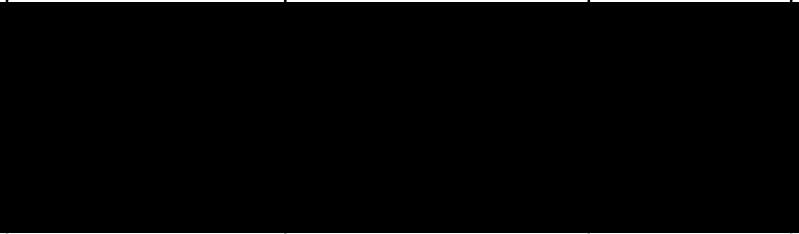

**Special Instructions:**  
 1. Taking enforcement action in any large group requires good judgement to ensure Officer safety and to prevent inciting the crowd. When possible, quickly remove suspects from the area to facilitate the continuation of the protest.



3. All Officers will have eye protection on their person at all times. Officers should be aware that small items could be thrown or propelled from within any large group.  
 4. All Officers will have their gas mask on their person at all times.

Communications Summary							
Function	System	Talk Group	Freq.	Function	System	Talk Group	Freq.
Crowd Mngmnt Event #1	■	■	■	Transit Police (Tunnel & Surface)	■	■	■
Crowd Mngmnt Event #2	■	■	■	Transit Police (Tunnel & Surface)	■	■	■
Crowd Mngmnt Command	■	■	■				

<b>Prepared by:</b> SPOC	<b>Approved by:</b>	<b>Date:</b>	<b>Time:</b>
-----------------------------	---------------------	--------------	--------------

<b>DIVISION ASSIGNMENT LIST (ICS-204)</b>		<b>Branch</b> Special Operations		<b>Division / Group</b> Prisoner Processing			
<b>Incident Name</b> Ferguson, MO Grand Jury Ruling		<b>Operational Period</b> From: _____ / _____ Hrs To: _____ / _____ Hrs					
<b>Operations Personnel</b>							
<b>Operations Section Chief</b>		<b>Division/Group Supervisor</b>					
<b>Branch Director</b>							
<b>Resources Assigned this Period</b>							
<b>Squad Name</b>	<b>Leader</b>	<b>Number Persons</b>	<b>Trans. Needed</b>	<b>Roll Call Time &amp; Location</b>	<b>Estimated Demob. Time</b>		
			No				
			No				
			No				
<b>Resource Roles and Responsibilities:</b>							
Will respond to any arrest location and take custody of arrestees. Will provide transportation of arrestee to the West Pct. and will process all paperwork required to book arrestees into KCJ. Prisoner Processing will provide prisoner transport vans to events as needed.							
<b>Special Instructions:</b>							
1. Taking enforcement action in any large group requires good judgement to ensure Officer safety and to prevent inciting the crowd. When possible, quickly remove suspects from the area to facilitate the continuation of the protest.							
							
3. All Officers will have eye protection on their person at all times. Officers should be aware that small items could be thrown or propelled from within any large group.							
4. All Officers will have their gas mask on their person at all times.							
<b>Communications Summary</b>							
<b>Function</b>	<b>System</b>	<b>Talk Group</b>	<b>Freq.</b>	<b>Function</b>	<b>System</b>	<b>Talk Group</b>	<b>Freq.</b>
Crowd Mngmnt Event #1	█	█	█	Transit Police (Tunnel & Surface)	█	█	█
Crowd Mngmnt Event #2	█	█	█	Transit Police (Tunnel & Surface)	█	█	█
Crowd Mngmnt Command	█	█	█				
<b>Prepared by:</b> SPOC		<b>Approved by:</b>		<b>Date:</b>		<b>Time:</b>	





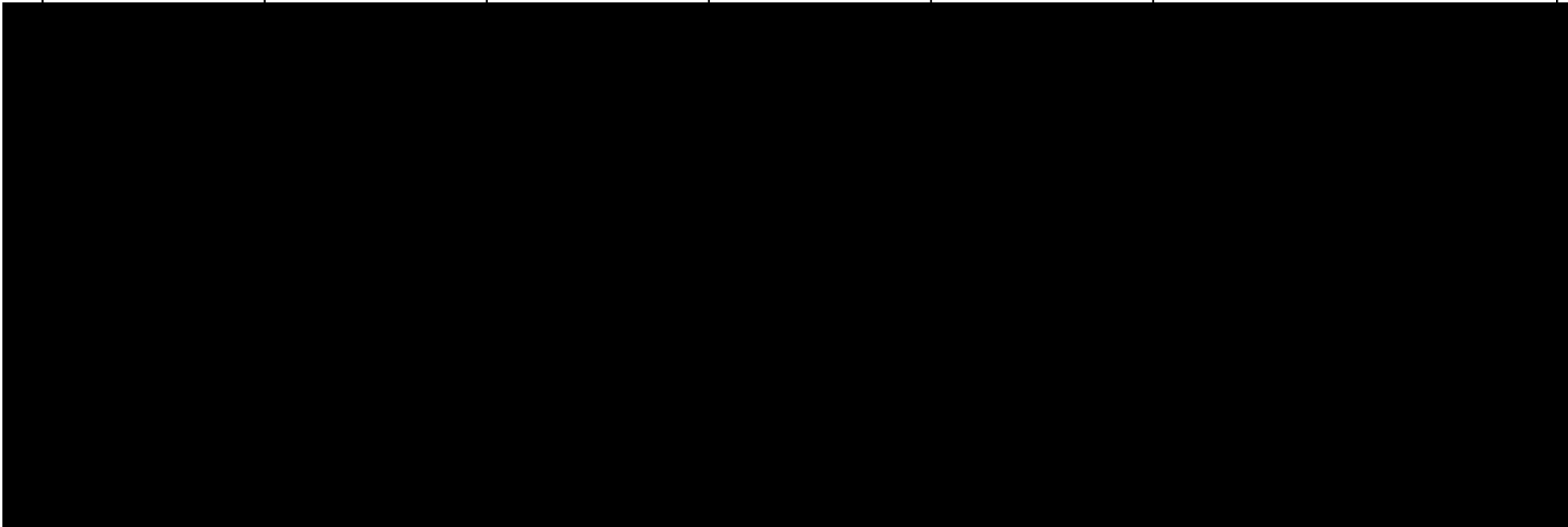


<b>DIVISION ASSIGNMENT LIST (ICS-204)</b>				Branch Logistics		Division / Group 911 Center	
Incident Name <b>Ferguson, MO Grand Jury Ruling</b>				Operational Period From: _____ / _____ Hrs To: _____ / _____ Hrs			
<b>Operations Personnel</b>							
Operations Section Chief			Division/Group Supervisor			Capt. D. Reed	
Branch Director							
<b>Resources Assigned this Period</b>							
Squad Name		Leader	Number Persons	Trans. Needed	Roll Call Time & Location		Estimated Demob. Time
[REDACTED]		[REDACTED]	[REDACTED]	[REDACTED]	[REDACTED]		[REDACTED]
<b>Resource Roles and Responsibilities:</b>							
<p>The SPD 911 Center will support the Operations Section by providing the radio communications necessary to conduct field operations required for this event. Dispatch operators will be assigned to radio talk channels to monitor, document and respond to requests from field operations.</p>							
<b>Special Instructions:</b>							
<b>Communications Summary</b>							
Function	System	Talk Group	Freq.	Function	System	Talk Group	Freq.
Crowd Mngmnt Event #1	[REDACTED]	[REDACTED]	[REDACTED]	Transit Police (Tunnel & Surface)	[REDACTED]	[REDACTED]	[REDACTED]
Crowd Mngmnt Event #2	[REDACTED]	[REDACTED]	[REDACTED] <sup>z</sup>	Transit Police (Tunnel & Surface)	[REDACTED]	[REDACTED]	[REDACTED]
Crowd Mngmnt Command	[REDACTED]	[REDACTED]	[REDACTED]				
Prepared by: SPOC			Approved by:			Date:	Time:

<b>INCIDENT RADIO COMMUNICATIONS PLAN</b>	Incident Name <b>Ferguson, MO Grand Jury Ruling</b>	Date/Time Prepared 11/21/2014	Operational Period Date/Time
-----------------------------------------------	--------------------------------------------------------	----------------------------------	------------------------------

<b>Basic Radio Channel Utilization</b>					
----------------------------------------	--	--	--	--	--

FUNCTION	RADIO TYPE / CACHE	TALK GROUP / CHANNEL	FREQUENCY / TONE	ASSIGNMENT	NOTES
----------	-----------------------	-------------------------	---------------------	------------	-------




**Prepared by (Communications Unit):**

P. Garch #4179

<b>Medical Plan</b>	<b>Incident Name</b> Ferguson, MO Grand Jury Ruling	<b>Date/Time Prep.</b>	<b>Operational Period</b>			
<b>Incident Medical Aid Stations</b>						
<b>Medical Aid Stations</b>	<b>Location</b>			<b>Paramedics</b>		
				Yes	No	
<b>Transportation</b>						
<b>Ambulance Services</b>						
<b>Name</b>	<b>Address</b>	<b>Phone</b>	<b>Paramedics</b>			
			Yes	No		
AMR	13075 Gateway Drive, Seattle	206-444-4444	X			
Airlift NW	6987 Perimeter Road South, Seattle	206-329-2569	X			
Rural Metro	6610 208th Street SW , Lynnwood	425-672-3555	X			
Tri-Med	18821 E Valley Hwy., Kent	206-243-5622	X			
<b>Incident / Event Ambulances</b>						
<b>Name</b>	<b>Location</b>			<b>Paramedics</b>		
				Yes	No	
<b>Hospitals</b>						
<b>Name</b>	<b>Address</b>	<b>Phone</b>	<b>Helipad</b>		<b>Burn Center</b>	
			Yes	No	Yes	No
Harborview	325 9th Avenue	206-731-3074	X		X	
Virginia Mason	1100 9th Avenue	206-583-6433		X		X
U of W	1959 Pacific Street	206-598-4000		X		X
Children's	4800 Sand Point Way NE	206-987-2222	X			X
Swedish	747 Broadway	206-386-2573		X		X
Northwest		206-368-1765		X		X
Providence		206-320-2111		X		X
Ballard Swedish	5300 Tallman Avenue NW	206-781-6341		X		X
<b>Medical Emergency Procedures</b>						
<p>There are no EMS or other SFD resources assigned to the overall event. In case of a medical emergency, officers will contact SPD Radio via a monitored talk channel and request medical aid. Officers will provide SPD Radio with all pertinent information regarding the medical attention required.</p> <p>Event organizers may have medical teams imbedded in the event. They may be available to assist with minor medical needs. These medical teams are not EMT's.</p> <p>SFD will have a command representative in SPOC for this event. There will be an SFD representative in the EOC as well.</p>						
ICS-206	<b>Prepared by:</b>		<b>Reviewed by:</b>			